

Fig. 1. The lay out of the buildings and yards of East Farm (nos 1-12) and West Farm (nos 13-20), taken from the 1907 OS Town map series, with some earlier details added. The buildings have been numbered for ease of reference in the text. The horizontal parallel lines indicate the approximate position of Hadrian's Wall. West Farm is shown in light blue, East Farm in orange, and the reduced size duck-pond over the Wall ditch in dark blue.



Fig. 2: A detail from Thompson's 1745 map of Walker showing the two triangular greens. The two sets of parallel black lines are waggon-ways (TWAM: D.NCP/19/21).

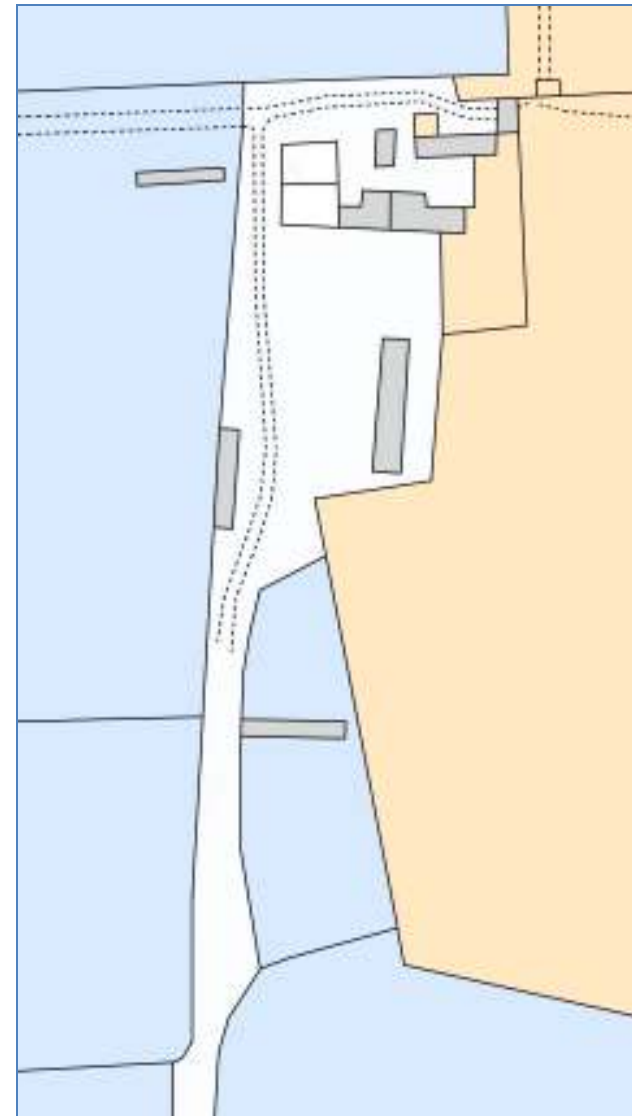


Fig. 3. Redrawn from Robson's 1798 map, with the property of West Farm in blue and East Farm in orange, showing the narrowed Town Green and the redirected road.

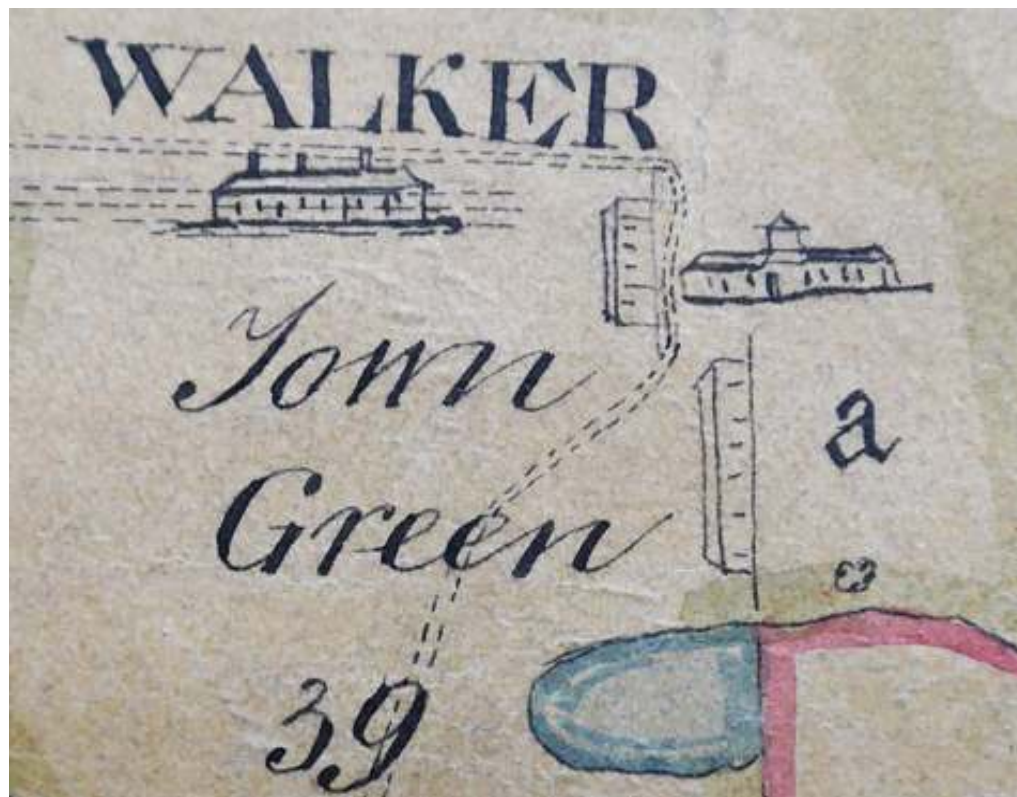


Fig 4: A detail of Isaac Thompson's map of 1745 (TWAM: D.NCP/19/21).



Fig 5: Field names of the Farms in 1840 (after TWAM D.NCP/19/4). West Farm is out-lined in blue, and East Farm in orange. See Appendix 3.



Fig. 6: Detail from Richardson's watercolour of Stott's House Farm, showing East Farm from the east in 1848. To the left is the roofless stone building. The building with the brown roof may be the gin-gang (Building 9), with a straw-stack in front of it; the stone-built gable end is the original farmstead (Building 7). Behind are the pantile roofs of Building 13, showing the division in the roof still visible in Fig. 12. The red gable end is Building 5, and the grey gable end Building 1. To the right of the road are miners' cottages related to Gosforth pit. TWCMS : G3851.



Fig. 7: First edition OS, surveyed in 1858 (published 1864), showing the duck pond between the road and the U-shaped courtyard of West Farm. There is a smaller pond south of the road towards the left-hand side of the map.

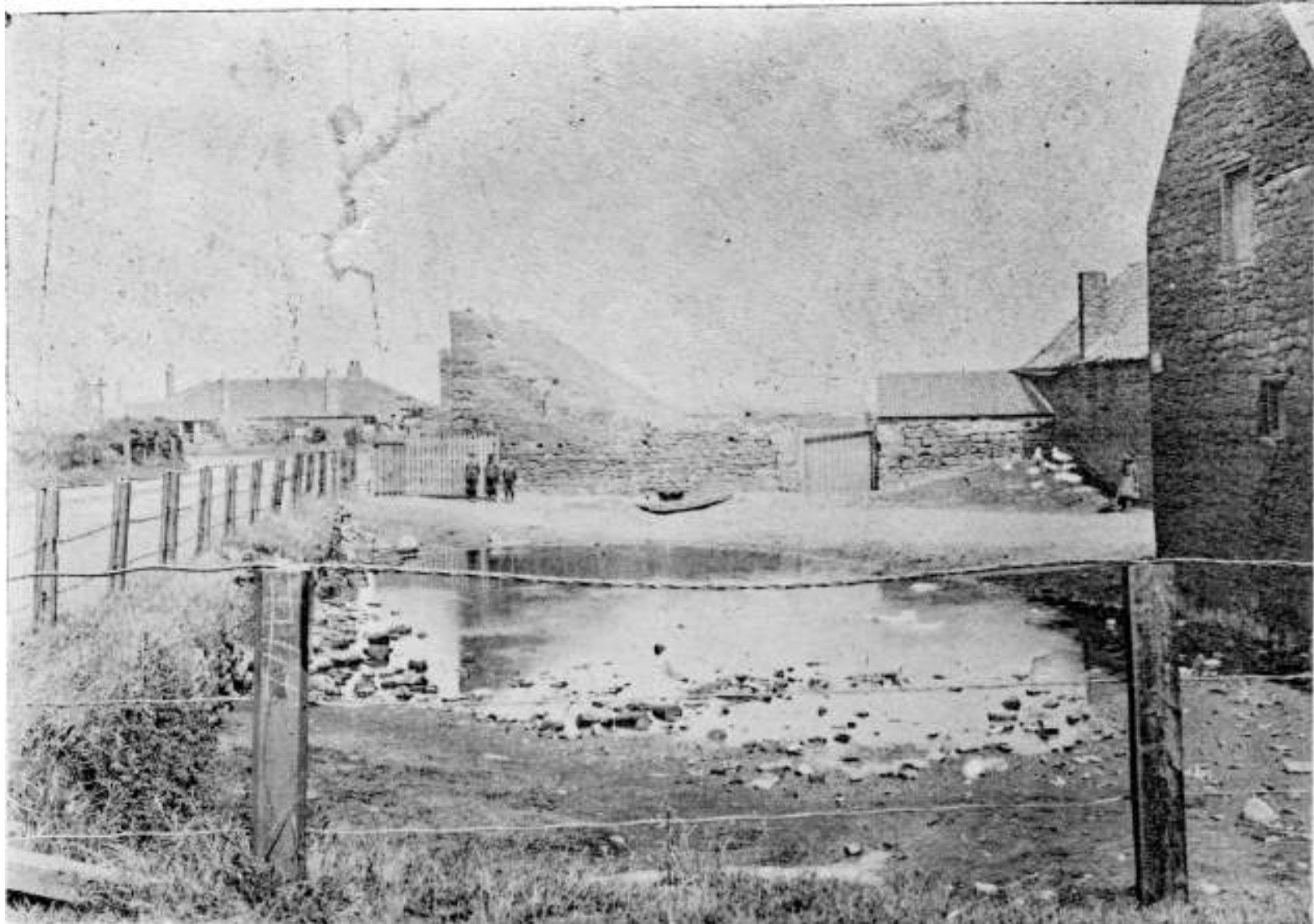


Fig. 8: The entrance yard of East Farm, looking east, with three children standing by the entrance gate and the remains of the duck pond over Hadrian's Wall ditch. To the extreme right is the gable end of Building 13, with Building 5 (with chimney) beyond it. c.1886. TWAM, Collingwood Bruce Collection



Fig. 9: Second edition OS map, revised 1894-5 (published 1899), West Farm's gin-gang (Building 16) has been demolished by this date, although that of East Farm survives.



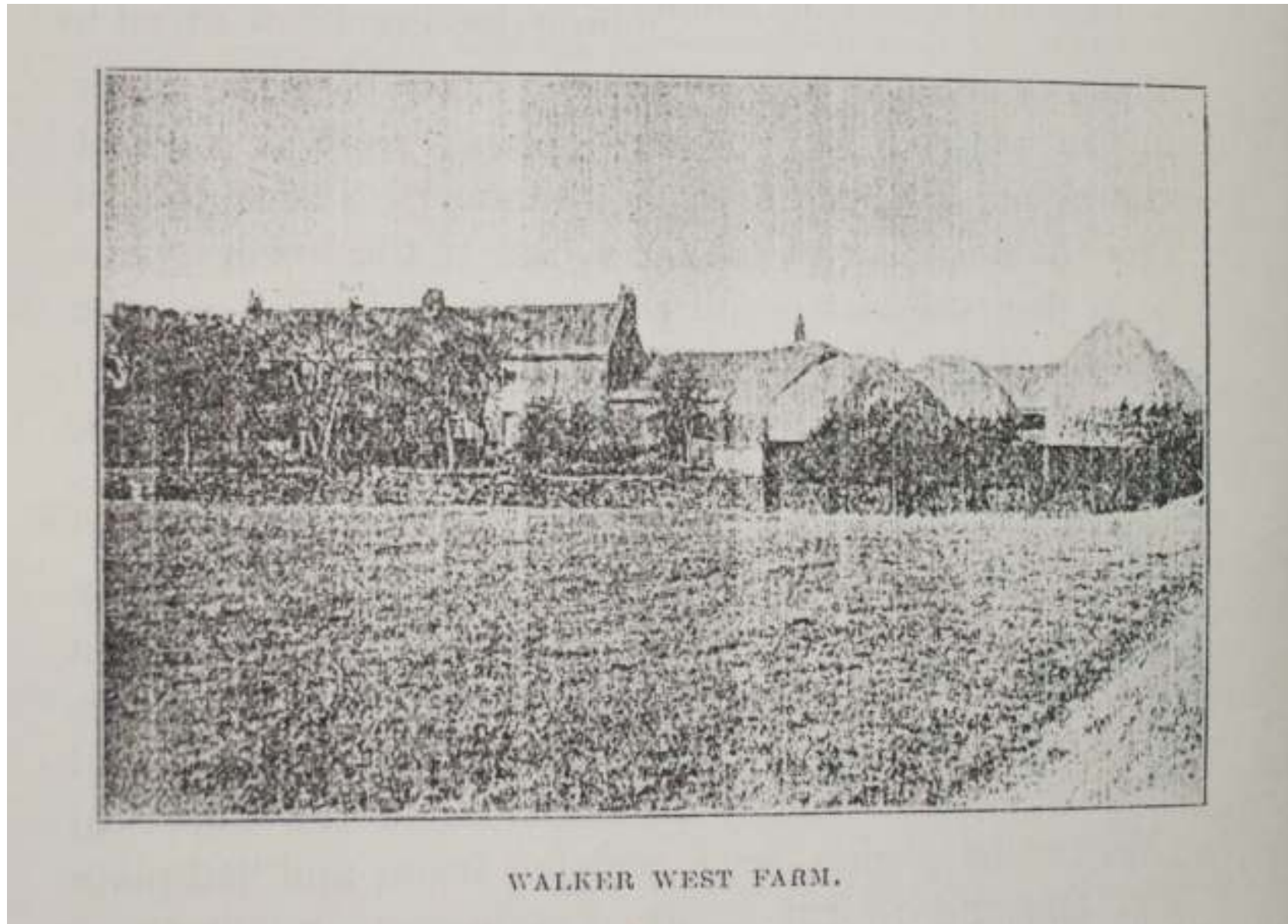


Fig. 10: A view of the farms from the south. The West Farm farm-house (Building 20) is hidden behind the trees, but part of East Farm farm-house is visible (Buildings 12 and 11). To the right are crop stacks in East Farm's stack-yard. The image, with its vertical lines, is poor in the original publication. After Crawford 1904.



Fig. 11: Part of the yard of East Farm, showing the back range of the farmhouse (Building 12) and lean-tos against Building 13 (note missing roof tiles). c.1925, winter. Newcastle Library Local Studies (Newcastle/agriculture/farms/Walker East Farm).



Fig. 12: Walker West Farm from the entrance gate into East Farm, showing Building 13 (behind the wooden hut), with nos 14 and 15 behind, and the duck pond, 1933: Newcastle Library Local Studies (Newcastle/agriculture/farms/Brown's farmstead)