

Fig. 1. Stott's House Farm as depicted on Isaac Thompson's 1745 map of Walker (north to top). The dotted lines represent the line of Hadrian's Wall and ditch (detail from TWAM D.NCP/18/6).

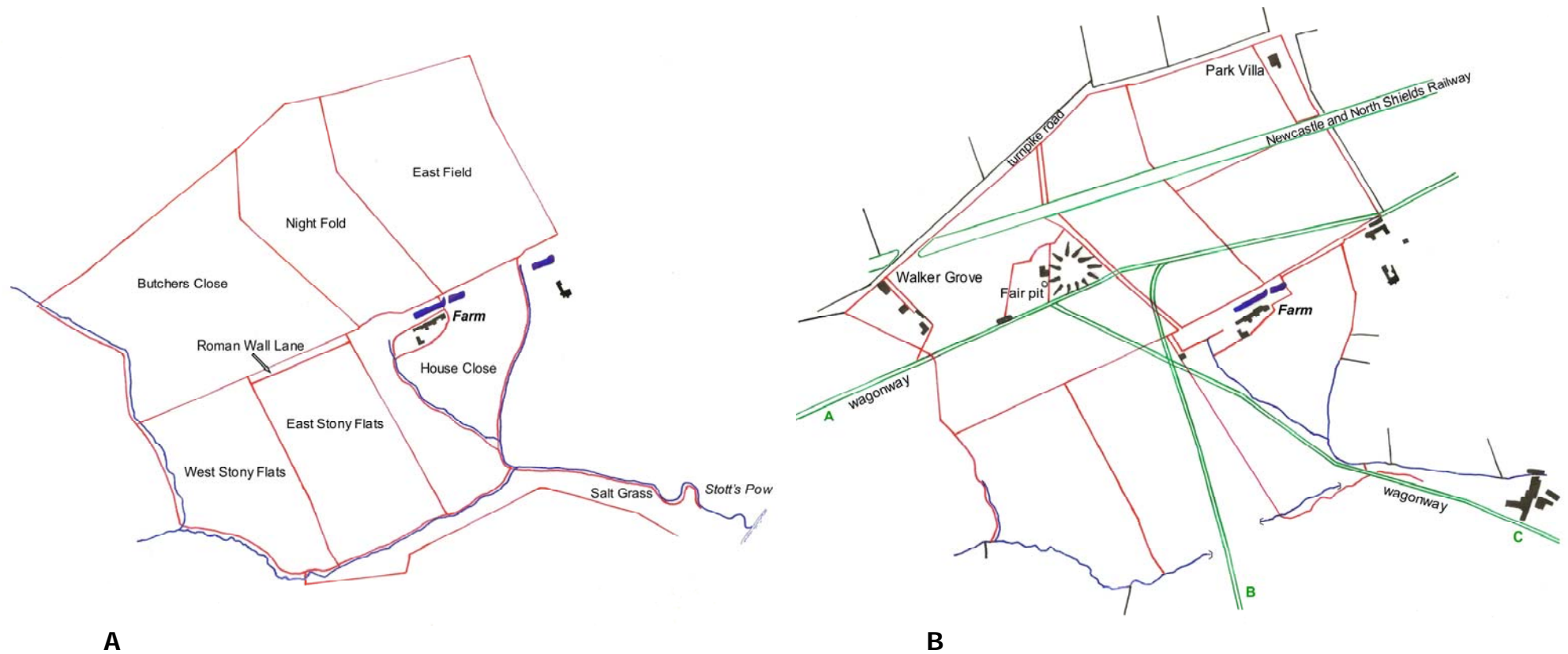


Fig. 2. A. The field names of the Farm, from Isaac Thompson's 1745 map.
 B. Buildings, the railway and wagonways built between 1745 and 1858. The wagonways were not all contemporary: Wagonway A: Gosforth to Wallsend wagonway (HER 4185) in use before 1828 and out of use by 1847; B: branch of A to Low Walker, in use after 1828 and out of use by 1840; C: Walker Fair Pit to Walker Staiths wagonway (HER 4266), in use before 1798, out of use by 1836.

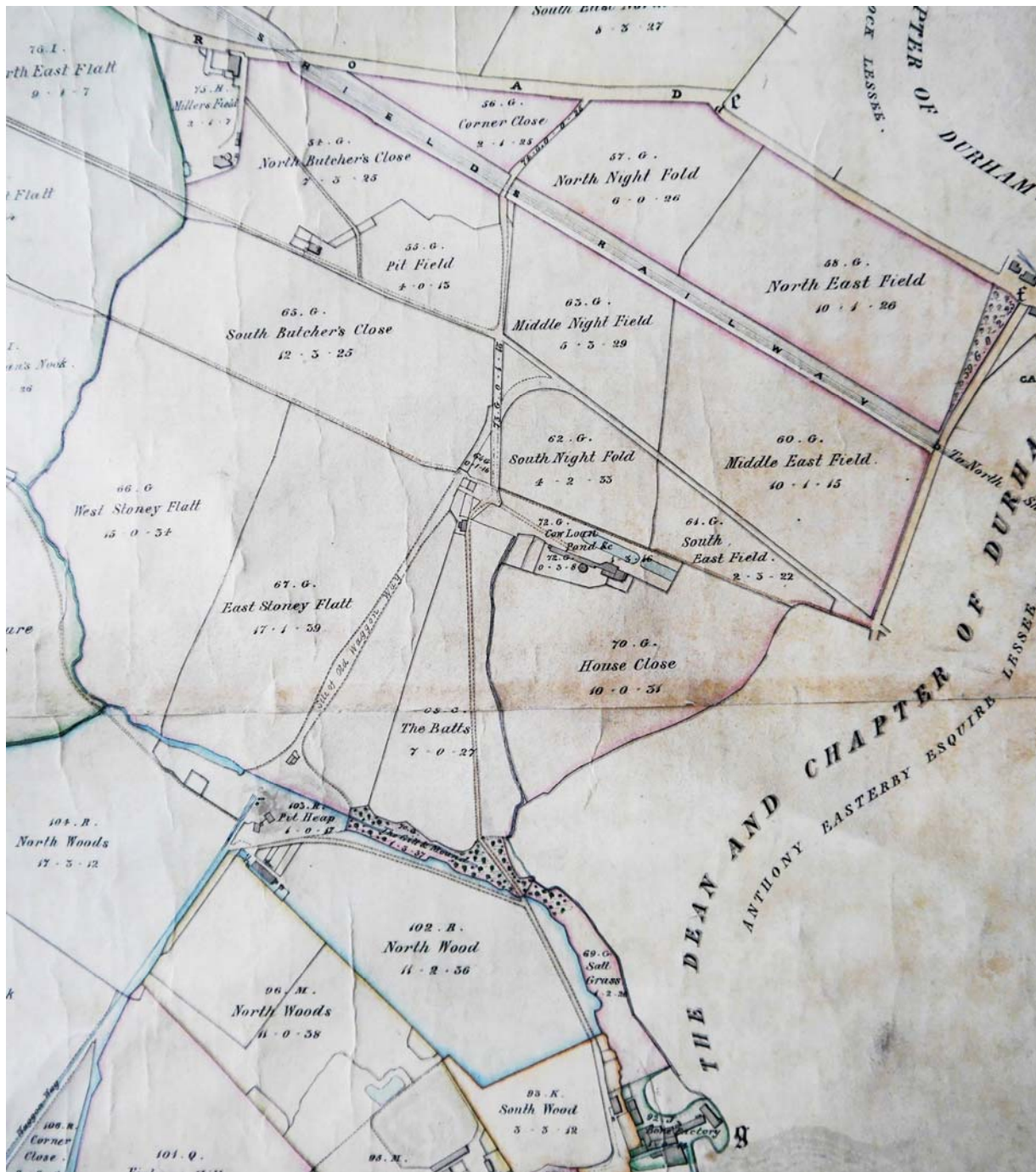
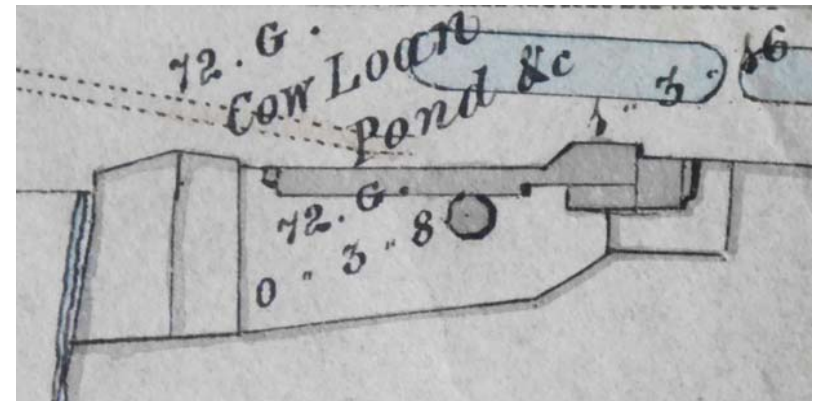


Fig. 3.
 A. The farm (highlighted in pink) and its field names as shown on Thomas Oliver's survey of Walker Estate of 1840. The enclosure in front of the building is labelled 'Cattle Loan Pond etc', and the section of woodland along Stott's Pow to the south 'The Gill & Mound'. TWAM D.NCP/19/4.

B. Detail showing of the farm-buildings.

A

B





A



B

Fig. 4. A. Richardson's painting of Stott's House Farm from the east *c.*1848, showing the duck pond on the line of Hadrian's Wall ditch.
B. Close-up of the farm buildings. Laing Art Gallery, acc. no. TWCMS : G3851. © Tyne and Wear Archives and Museums.

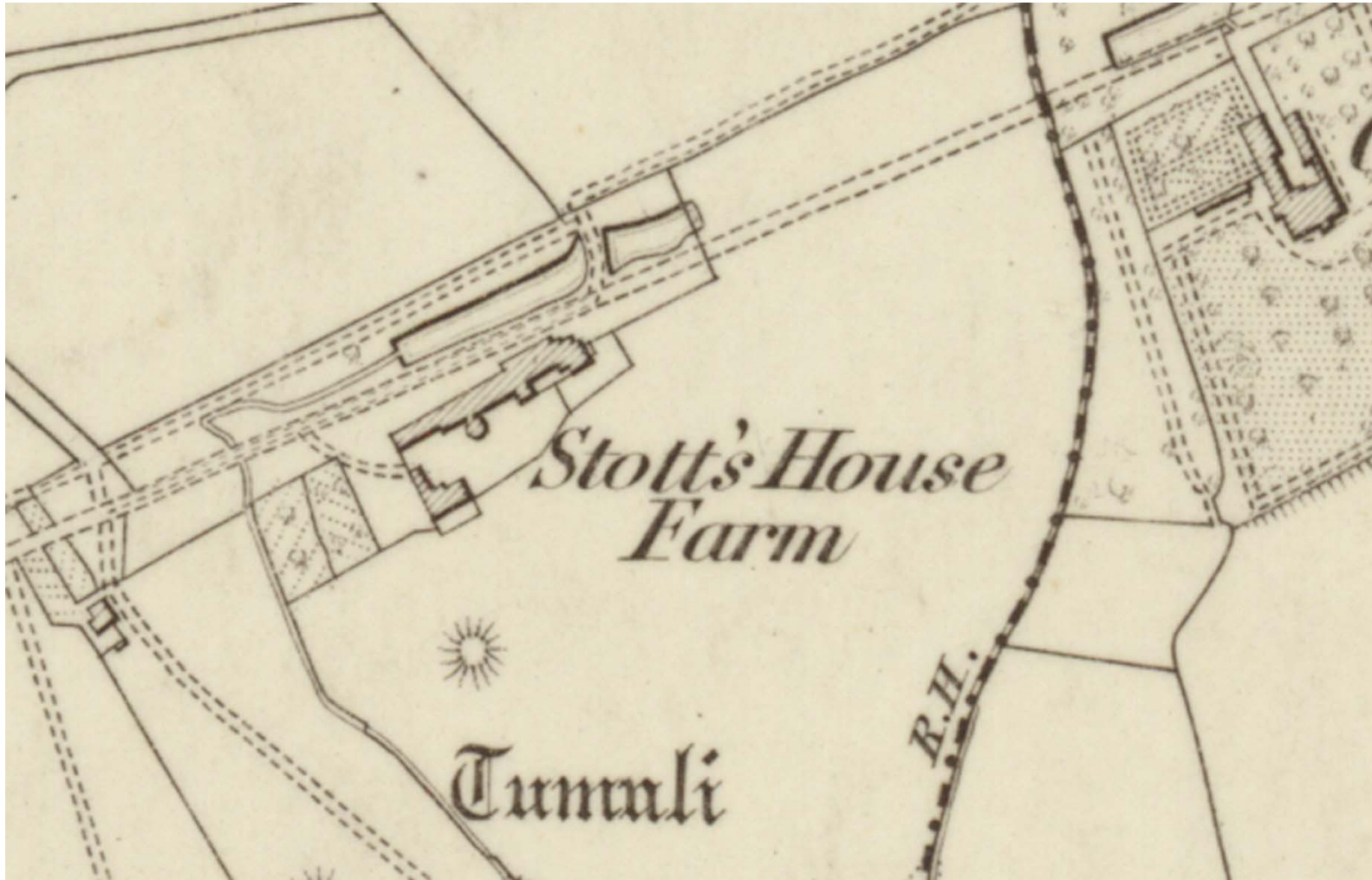


Fig. 5. First edition OS, surveyed 1858 (published 1862), showing the duck ponds over the line of Hadrian's Wall ditch and the stream leading away from them (the position of the Wall is shown by parallel dashed lines) and the L-shaped house built behind the farm. The 'tumiuli' is post-medieval in date.

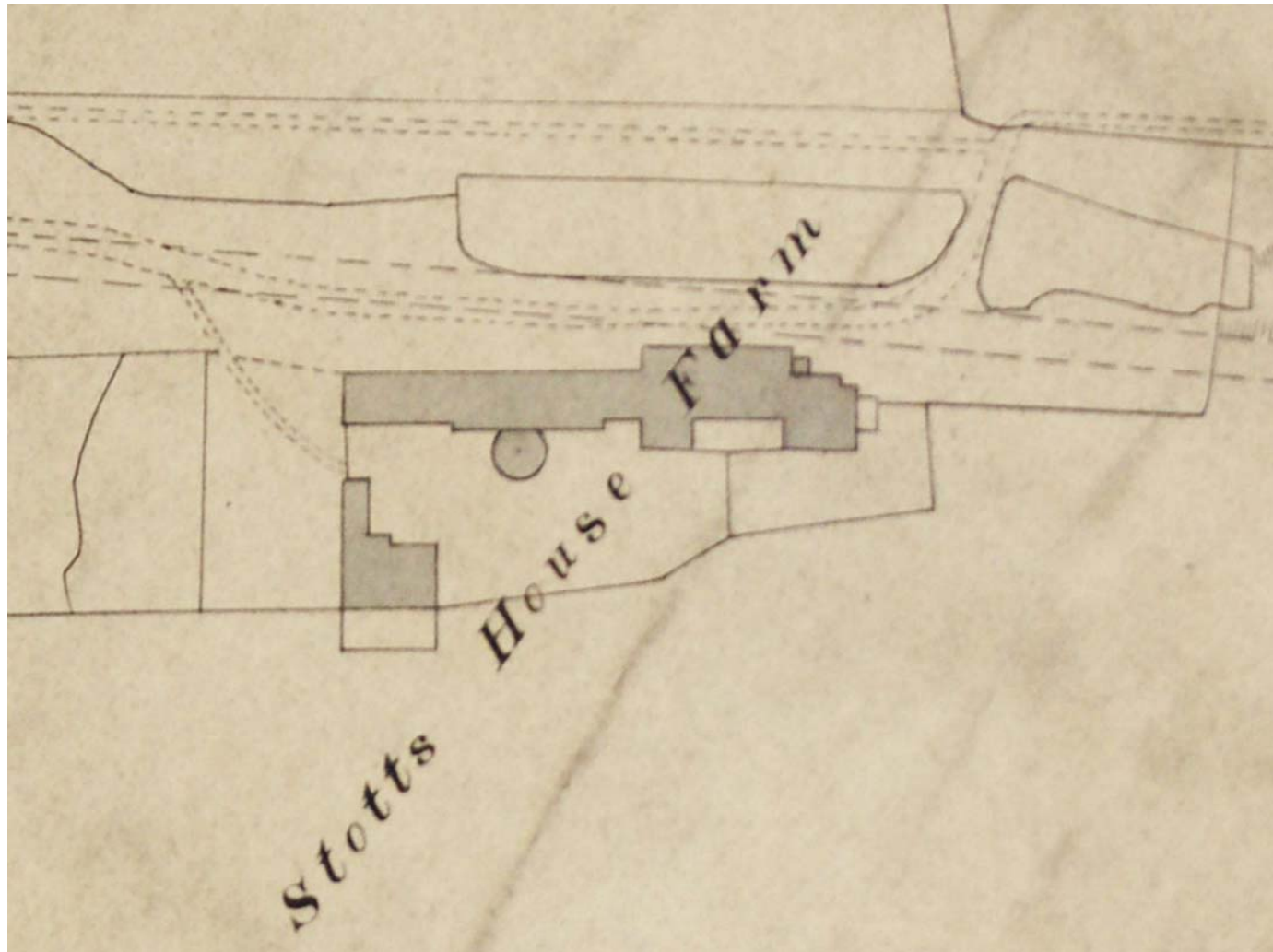


Fig. 6. The ground-plan of the Stott's House Farm in 1864 (north to top). Detail from John Lamb's survey of part of the Walker Estate (TWAM D.NCP/19/6).



J. IRWIN COATES 1879.

Fosse and Course of Wall,
"Stote's Houses."

Fig. 7. Watercolour of the farmstead from the east, showing the farmhouse to the left, the original farmstead in the centre, and the private house The Grange to the right. There are hay stacks in the yard to the side of the farm house. Watercolour by J Irwin Coates, 1879. Reproduced by kind permission of Ackworth School.

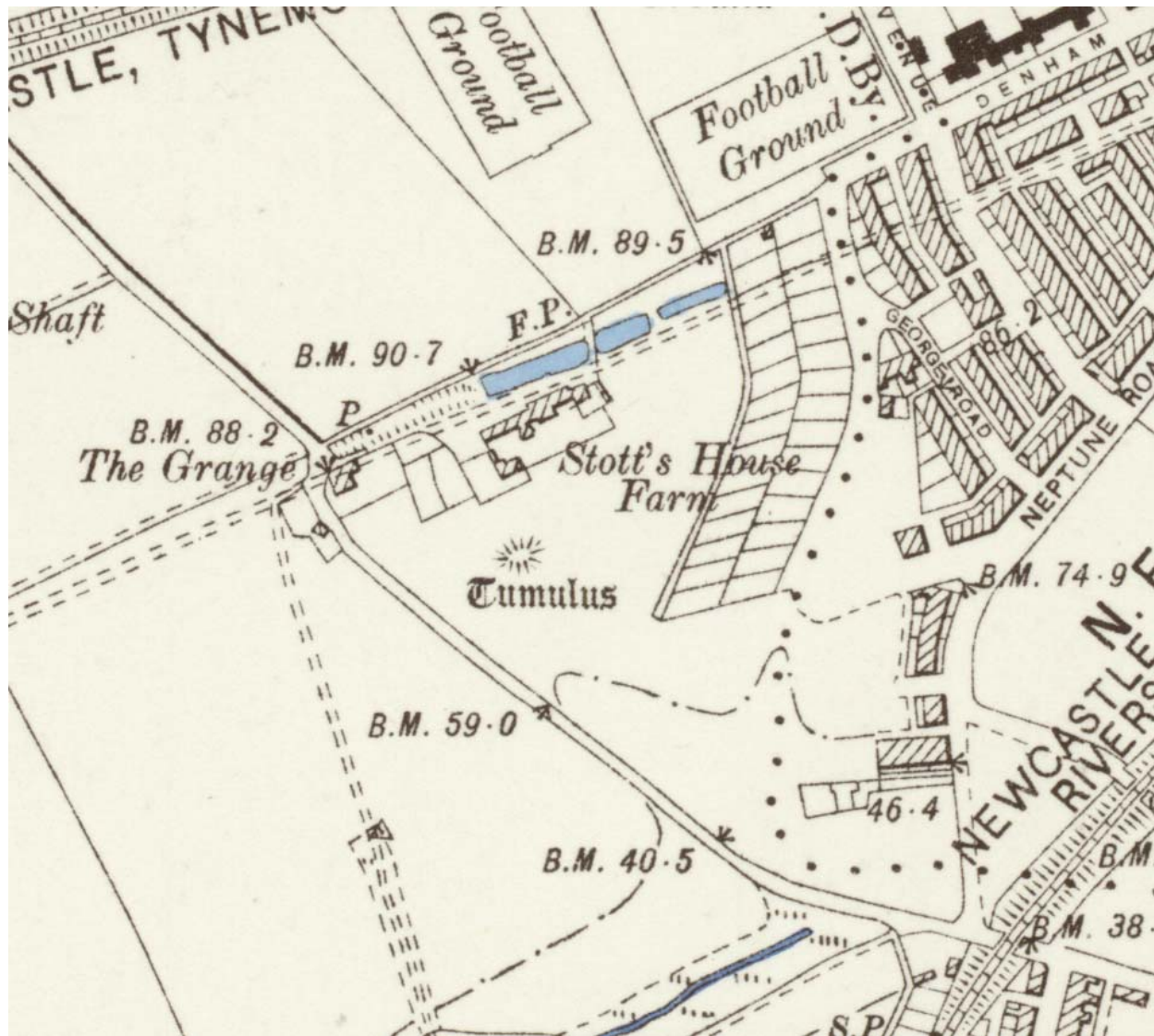


Fig. 8. Second edition OS map, revised 1894-5 (published 1899)



Fig. 9. The Farm, showing the house at the west end. The first door visible to the left can also be seen in Figure 10. Behind the farm can be seen the chimneys of the farmhouse, and on the extreme right is The Grange, built *c.*1886, which still survives (Newcastle Library Local Studies).



Fig. 10. The east end of Stott's House Farm, showing the original farmhouse and the duck ponds over Hadrian's Wall ditch. This dates to before 1898 as Carville Hall (demolished in that year) is visible in the background (Newcastle Library Local Studies).

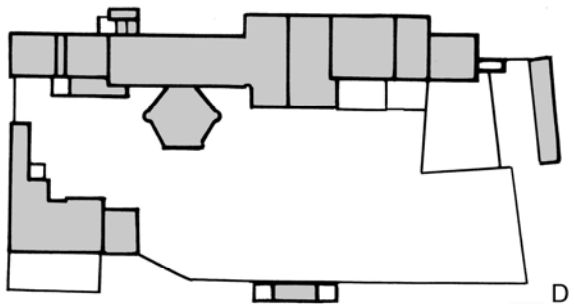
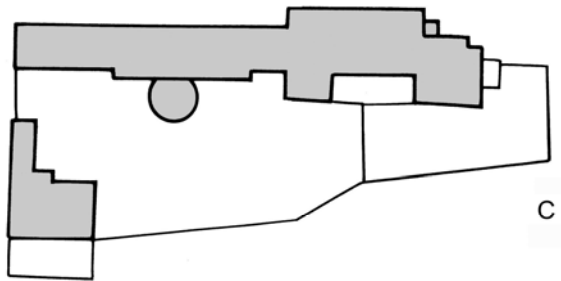
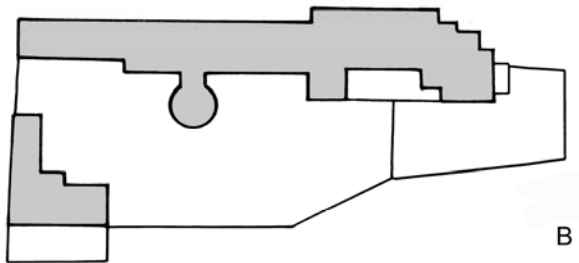
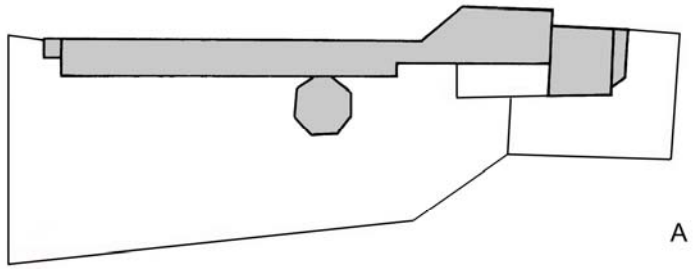


Fig. 11. Plans of the farm (north to top).

A. Oliver's map of 1840.

B. First Edition OS map (surveyed 1858).

C. John Lamb's Survey of part of the Walker Estate, 1864.

D. Newcastle OS 1:500 Town map, 1907.



A



B

Fig. 12. A. Detail from a photograph of the Farm *c.*1933, looking towards the east.

B. The full photograph, showing the public footpath to the left and the dried up duck ponds (Newcastle Library Local Studies).